

Steel-Screw-Platform Version 3 – Cargotrail SSP3

Order:

Inquiry:

Date:

Company:

Telephone:

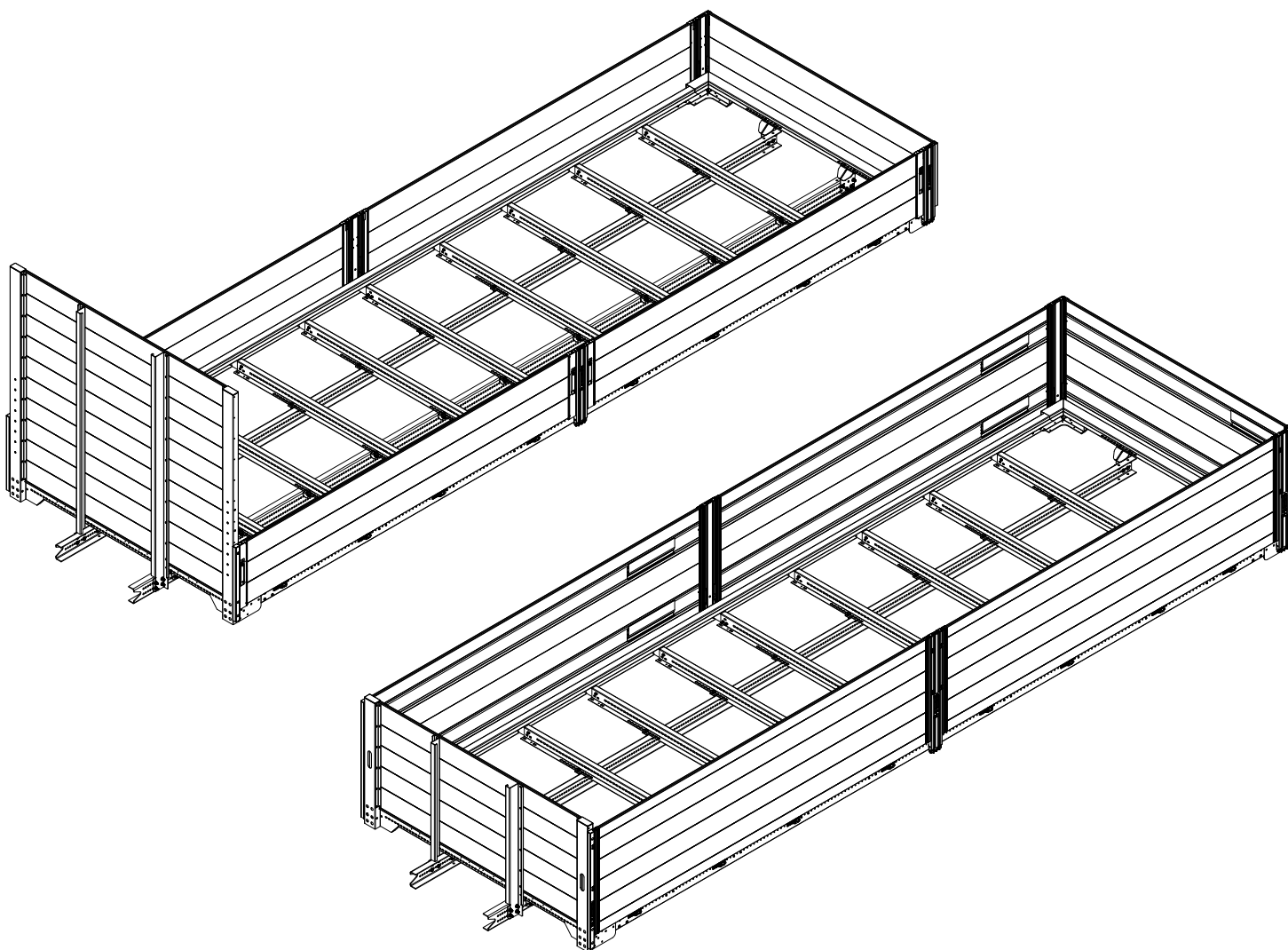
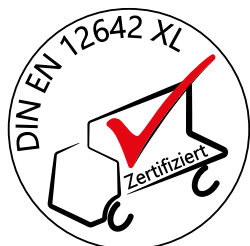
Quantity/pieces:

Name:

E-Mail:

Commission:

Address:



© 2025 Suer Nutzfahrzeugtechnik GmbH & Co. KG · Technical changes and errors excepted.

1) FLOOR ASSEMBLY SPECIFICATIONS

Number of bodies:

Required body payload:

kg

(Max 14500 kg)

Type of body:

Body length:

Certified version:

Subframe:

Welded brackets for customer's own subframes:

(Supplied without subframe, brackets for welding provided)

2) FEATURES

Floor recess:

(Floor frame with lashing point stops only possible with 30 mm recess)

Number of lashing bracket pairs:

(Required only for flat floor frames)

Cross member spacing:

Number of cross members:

Additional cross member / quantity:

Number of high support bracket pairs:

Only for Suer subframes

Number of flat support bracket pairs:



Perforated sliding plate:



Ram guard **621332**:

Version:



Number of brackets for side underrun protection

380569734:

3) MULTISAVE

MultiSave cross member for Multi Stick 70:

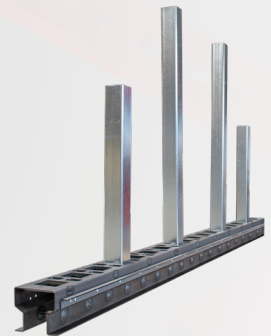
Multi Stick 70:

Multi X floor securing track length 2400mm: transversely:

Version:

Multi X floor securing track length 2400mm: longitudinally:

Version:



4) MULTIFIXX

MultiFixx cross member for Multi Stick 70:

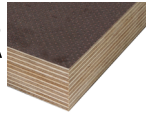
MultiFixx longitudinal member for Multi Stick 70:

MultiFixx stick 70 - each 1500 mm:

Version:

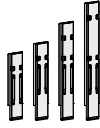


5) WOOD FLOOR



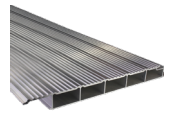
Phenolik plywood board:

7) PILLARS



Number of centre pillars:

6) ALUMINIUM FLOOR



Aluminium floor, laid transversely:

Aluminium floor, laid longitudinally:

8) HEADBOARD

Headboard height: mm

Headboard support: mm

9) SIDEBOARDS

Sideboard height 500 mm - 1000 mm: mm

Sideboard surface:

Folding tread plate (recessed or sliding):

Tarpaulin eyelet rail:

Sideboard lifting aid:

Sideboard lock / retainer (only for side walls):

Powder coating: RAL

10) REAR WALL

Rear wall version:

Rear wall height:

Rear wall support:

REMARKS/SPECIAL REQUESTS

Please send by e-mail to info@suer.de